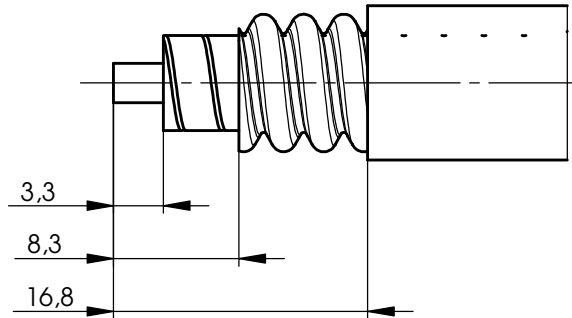


Assembly Instruction

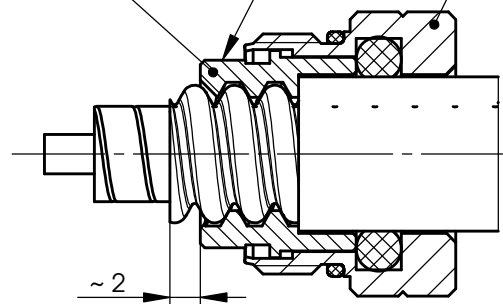
Montageanweisung



screw cable sleeve on the cable
Kabelhülse auf Kabel aufschrauben

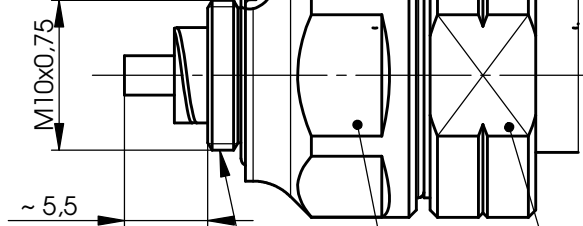
af 11
SW 11

pressure screw
Druckschraube



screw housing on pressure screw
recommended torque 10 Nm
Please note Left hand thread!
Gehäuse auf Druckschraube schrauben
Empfohlenes Anzugsmoment 10 Nm
Linksgewinde beachten!

sealing /Dichtung



recommended tightening torque:
Empfohlenes Anzugsmoment: $5 \pm 0,5$ Nm

hex 17
SW 17

af 17
SW 17

a	26018	06.08.2014	GB
Änd./ rev. Index	Änderungs-Nr. / revision code	Datum/ date	Name/ name

Original original	A4	Blatt/ sheet von/ of 1
----------------------	----	---------------------------

	Datum/ date	Name/ name
gez./ drawn	07.04.2010	GB
gepr./ appr.	14.04.2010	PU

Maßstab/ scale	2:1
-------------------	-----

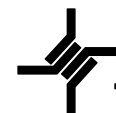
Benennung/ title

cable clamp IP 67 SCF 38-50 J, RFF3/8"-50
Kabelabfangung IP67 SCF 38-50 J, RFF3/8"-50

Unterl./
doc.
type R

Zeichnungsnr./ drawing no.
T00100D0013

Ersatz für / replaces
EWA90165-00M



Telegärtner