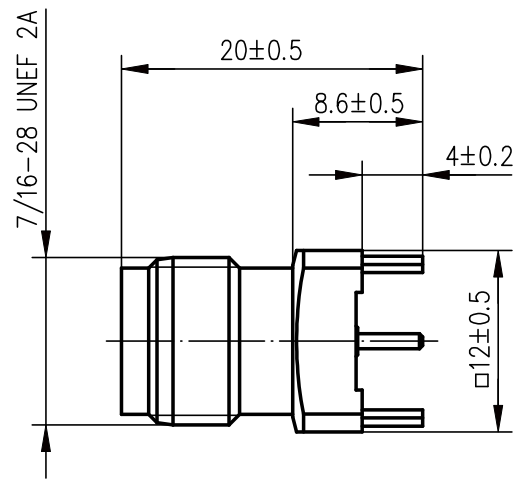
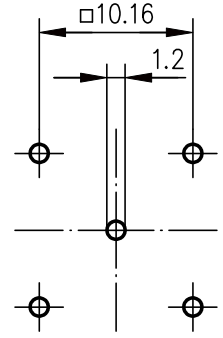


Anschlußmaße nach IEC 169-17 / mating face according to IEC 169-17





Montagebohrungen Z06
panel piercings



Innenleiter / inner conductor
 Außenleiter / outer conductor
 sonstige Metallteile / other metal parts
 Isolierungen / insulators

CuPb1.15Ni1 (C97)
 CuZn39Pb3
 CuZn39Pb3
 PTFE

Cu1Ni2Au0.8
 Cu2Ni5
 CuSnZn3

				98	Datum/date	Name/name	Werkstoff/ material
				gez./drawn	12.05.	KL	
				gepr./appr.	13.05.98	BE	Oberfläche/ finish
				Norm/stand.			
				Maßstab/scale	Benennung/title		
				2:1	TNC-Buchse TNC Jack		
				untol. Maße/ dim. without tolerances according to	Unteri./doc.type	Zeichnungsnr./drawing no.	
					K	J01011A2944	 Maße/dimensions: mm
Änd./rev. Index	Änderungsmittellung/ revision code	Datum/ date	Name/ name	Ersatz für/ replaces			Original: DIN A4